

ROTMAN

2013-2014

CONTENTS



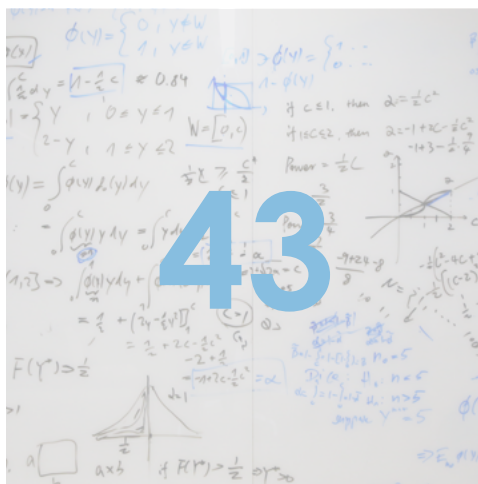
Messages From

The Dean	05
The Editor	06
The GBC	08
The Valedictorian	10



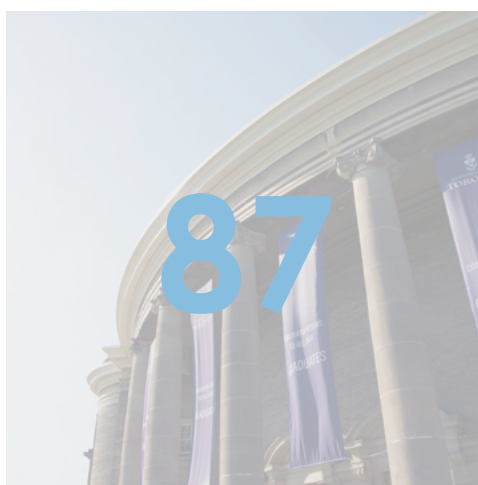
Group Photos

Administration	13
MBA Faculty	14
Club Executives	24
Sports Teams	34
First Year Sections	36



The Year 2013-14

Orientation Camp	44
Halloween Party	54
The Bootlegger's Ball	56
End of Term Party	60
Tipsy Tuesdays	63
No Talent Night	69
Holi Party	72
Amazing Race	74
Grad Ball	77
Morning & Evening Cohort	83
Two's Company	85



Class of 2014

Graduate Photos	88
Rotman Idols	105

Yearbook 2014

GBC President: Alex Yeo
 VP Internal: Blake Connoy
 Yearbook Manager: Shiva Prakash
 Design and Art Direction: Bing Lin
 Photography: Martin Ursua
 Content: Chayanika Chandra, Zoe Zou

MESSAGES



Message from the Dean



“..you are forever a member of the Rotman family..”

Congratulations to each and every one of you on the completion of another challenging but rewarding academic year at the Rotman School of Management. Our success and global reputation is measured in large part by the engagement of our students and the work you go on to do in the world.

Those of you who are graduating are beginning an important new phase of your life. This moment is likely filled with excitement and promise, but some trepidation too. Take comfort in the fact that the

education you have received here, and the network of close friends you have developed, will serve you well in the years ahead. For those of you returning next year, this is your opportunity to become student leaders. I encourage you to grasp the opportunity to give back and share your skills and expertise, both here at Rotman and out in the world.

As Rotman graduates, you will join a network of more than 20,000 UofT business alumni in over 70 countries. I encourage you to take advantage of

the benefits available to our alumni, including access to an ongoing suite of speaker series, our award-winning magazine, an annual day each spring set aside for Life-Long Learning, and an expanding roster of volunteer opportunities that include mentoring future students. Our recently-revamped alumni portal, Rotman Connect, makes it easy for you to stay in touch with your peers and with the School: be sure to join, and visit it often. Never forget that even after you ‘leave the building’, you are forever a member of the Rot-

man family. We trust that you will follow your School with interest and support it as our global reputation continues to grow. At Rotman, we train you to be effective problem solvers who can tackle some of the world's biggest problems, and we look forward to the impact you will have on your organization and the world. On behalf of all Rotman faculty and staff, my very best wishes to each of you as you progress on your journey. We are honoured to have been a part of it.

Peter Pauly
Interim Dean



FROM THE EDITORS

MANAGER AND EDITOR-IN-CHIEF: SHIVA PRAKASH

DESIGN AND ART DIRECTION: BING LIN

PHOTOGRAPHY: MARTIN URSUA

CONTENT: CHAYANIK A CHANDRA, ZOE ZOU

As yearbooks go, this one is not entirely different from others of its kind. It is, as yearbooks generally are, a fairly accurate, unexaggerated and a rather condensed representation of the extraordinary journey (or ordeal depending on your PoV) that this MBA was for most of us.

And yet there are quite a few things that make this Yearbook as remarkable as the year it represents. It

is the 17th yearbook since the Faculty of Management at the University of Toronto was renamed Joseph L. Rotman School of Management in 1996 and is also the first-ever digital Rotman Yearbook to be published. This yearbook also saw greater collaboration between the Full-time and the Morning/Evening cohorts to ensure a more holistic depiction of the Rotman MBA.

The production of

this yearbook is the culmination of multiple meetings, frantic scheduling and a gazillion mails sent out asking for photos. Needless to say, this feat would not have been even remotely achievable if not for the efforts of certain people.

My gratitude, then, must go to the appropriate quarters:

To **Bing Lin**, who designed a peppy layout for the first-ever digital

Rotman Yearbook. You have been a lifesaver too many times to count and I cannot thank you enough for all the last minute edits you put up with and your soothing replies to all my emails that screamed URGENT from the subject line.

To **Blake Connoy**, who has been a patient friend and guide throughout the year and as much a part of the Yearbook Team as the rest of us. Your dedication to our cause has been truly remarkable and deeply appreciated.

To **Chayanika Chandra** and **Zoe Zou** for helping me put together the content for the Yearbook. Brainstorming sessions were double the fun because of you guys.

To **Martin Ursua**, who, almost single-handedly, took on the herculean task of documenting the year's events, in and

around Rotman.

To **Krishna Vempati** and **Christopher Lam** of the Rotman Photography Association who have stepped in time and again to organize section photo-shoots and collaborate on other projects. Also to **Gurucharan Kodali** and several members of the Class of 2015 who volunteered photos from the Orientation Camp.

To **Christina D'Alimonte**, **Erin Marcotte**, **Katie Gardon**, **Nico Gonzalez** and **Ahmad Ayyub** for ALWAYS lending a helping hand.

To **Margaret Charles**, from the Program Services Office, whose excellent coordination is heartily appreciated by the team.

To the **Rotman Marketing Team** who shared their goodness AND their Dropbox ac-

counts with our team.

And to **Shankar Menon** for his continual support and for the countless times he has pitched in behind the scenes. Whether it was lending a hand in manually uploading 1500+ grad photos, helping me through organizational nightmares or simply preserving my sanity through it all - I am truly grateful to you.

It was truly rewarding to have been part of creating something which you will all *hopefully* turn to when you think of Rotman and the magical year that was.

Thank you very much indeed!

Shiva Prakash
Manager and Editor-in Chief



Message from the GBC

“..being in the Rotman MBA is like being on the inside of a 360 person joke....”

ALEX YEO
President,
Graduate Business
Council (GBC)

Hi everyone!
I am sure that I speak on behalf of everyone when I say that it has been a whirlwind of a year. Whether you are a first or a second year, a full-time or morning/evening student, we have all torn our hair out over the latest finance homework, spent late nights

working together on a case competition, and made many new friends along the way.

For those who have another year (or two) left at Rotman, I say - “you guys are really lucky!” Why do I say that? Because you will have another year to enjoy time with the close friends that you’ve made at Rotman. Because, as a close friend once said, being in the Rotman

MBA is like being on the inside of a 360 person joke. Only folks in your year will get your MBA jokes, and only people in the class of 2015 will appreciate the genius that is Rotvegas. And finally, because you will have more time when you start taking electives this year, and you will be able to enjoy life both inside and outside of Rotman in this coming year.



For those who are graduating this year (like me), it feels almost sad to know that we are done. That this is the last time we'll be able to catch up for coffee (or Mother's Dumplings) in the middle of the day, or that this is the last time we'll be able to catch a drink together at Topsy Tuesdays or Thirsty Thursdays.

All in all, it's been an amazing ride, and I hope we all take away some amazing memories from our time here at Rotman. As the year draws to an end, what are some of your favorite memories? Here are some of mine :

- Patrick Lawrence's different hairstyles and beard lengths from start to finish
- Alex Bronstein and his various party and camp outfits
- Tyrenny and her passion for Outreach
- Running like a madman during the Amazing Race with Jonathan, Terri and Julianne
- Partying with all the Indian students at the Holi and Diwali parties

Cheers everyone!

BLAKE CONNOY
Vice-President Internal
Graduate Business Council (GBC)

Congratulations for completing your year at Rotman!

Extending on the memories that we share, let's

also look ahead to our future. As graduates or soon-to-be graduates of the #1 business school in Canada (shout out to the Financial Times!), our opportunities are broad and compelling! And while the letters M.B.A. are helpful, it is important to recognize that it is up to us – Rotmanites – to make them meaningful.

Rotman is our brand, where our friendships have formed, and ultimately our bond. As a school, we are graduating the largest classes of MBAs in Canada. The Rotman network – our network – is growing rapidly. Continue to stay connected to one another and the greater Rotman network as we advance in our careers. And stay connected to the school through Alumni Relations and the Career Centre.

If there is anything I have learned at Rotman, it is that people and relationships matter most! So while we have finished a year at Rotman, ready to return again this September or progress to the next stage of our careers, remember that it is the people we have met and will meet that create the memories that we will cherish. Be proud of one another and our time here at Rotman! And continue to share that pride and pay-it-forward as we support one another and future Rotmanites as our alumni have supported us in advancing our personal and professional goals.

Stay connected and we can really make the Rotman MBA meaningful!



Valedictorian's Address



Welcome class of 2014. I just want to say, we did it! It's an honor to be here tonight. There's a lot of pressure on me tonight. Some of you took time to nominate me; some of you took time to rank me out of 10. Thank you! What I like to think you were thinking is "Whoa, that Tom! He's so deep and stoic. I hope his beautiful face graces us with a salacious epitaph on how we can approach the journey ahead." The reality is that a lot of you know I write suggestive tipsy write ups and likely wanted to hear one or

two while you waited for the third bottle of wine to come to your table.

You're smart people, there is no doubting that. But before I flatter you with praises, I need to first thank a particular group that is here tonight. That spouse, lover, girlfriend, boyfriend, friend, grandma, second cousin, and escort - those people either met you here or were hanging out with you before. Regardless, I think you lovely people can be summed up in one word - tolerant. Who

are we kidding here guys? Take away our fancy hair cuts and nice clothes and we're all just really big nerds.

No seriously, we are. These are people who regularly post economist articles on Facebook, people who craft power-point decks for spring break trips, they use regressions to figure out when its optimally sunny for their wedding. One guy ruined his Caribbean vacation by talking to his partner about agency theory as it relates to why his cab

driver tried to sell them cheap tourist souvenirs and on the next vacation in New York spent a majority of his time working on a case competition.

On to you guys - You remember our first marked assignment? Business Ethics. Business Ethics! I remember thinking, I'm going to kill this assignment; I exude ethics. My middle name is ethics. I love ethical food. I remember pouring a solid couple hours into this write up, I was on fire, quoting Goethe, applying so many frameworks, I thought

to myself, this is going to be the effort I put in for everything. MAN! I'm going to be great! Walked into class, riding high-

"Hey, did you do that ethics thing last night?"

"Yeah, me too. Murdered it." Then I went on to the e-gradebook. 3. I got a 3, at first I didn't know what that meant and then I looked at the grade distribution. It was out of 7!! Who marks things out of 7? How's that ethical? I realized as I sat in the middle of the distribution. I was normal. For us type-A personalities that hurts, we like to be incomparable. What I realized was people are smart, like really smart. And it didn't happen at first, but by about January, I learned something really valuable. I learned it was okay to be wrong, it was okay to ask for help, that the people in this room right now, weren't competition, but people that I could really learn from.

So I guess what I'm trying to say is don't be shy to just reach and expose yourself. Wait no, phrasing. Reach out and ask for help. Because opening up like that, allows that other person to ask for help as well. I think the bigger thing I'm trying to get at here isn't to just always ask for help, we should be there for each other. You're likely not going to stay in touch with everyone in this room, that's ridiculous, but the people you are close with now, make an effort to make sure they're still part of your life 2

months, 2 years, 2 decades from now. Because these people know what you are capable of, and they'll help you continue to make the right decisions. Also, some of them might become stupid rich and considering you can't predict the future, hedge your bets.

All of you are going to land amazing jobs, some of you sooner than others. Some of you already have that dream consulting gig or that killer IB job. This will likely lead you to a beautiful home, a fancy sports car, maybe a sports yacht, if you play your cards right maybe even a sports plane. Some of you might even go on to own a small island where you experiment with the DNA of an insect to bring dinosaurs back to life and...Hey, like I said guys, hedge your bets... Anyway, as the Rotman Brochure said, untold fortunes guaranteed! The only thing I ask is that you look back at the decision of coming to Rotman in the first place. It was a risk, it was a bet that you were going to be better off devoting countless hours to this degree than the alternative. What did you receive? I can't speak to your full experience, but I want to reinforce the fact that you at least got the people in this room. Smart, passionate, engaged people, who are well worth the price of tuition. The thing is, I want you to continue taking those risks. Yes, maybe in relation to Dino DNA, but more importantly, with your life. Don't

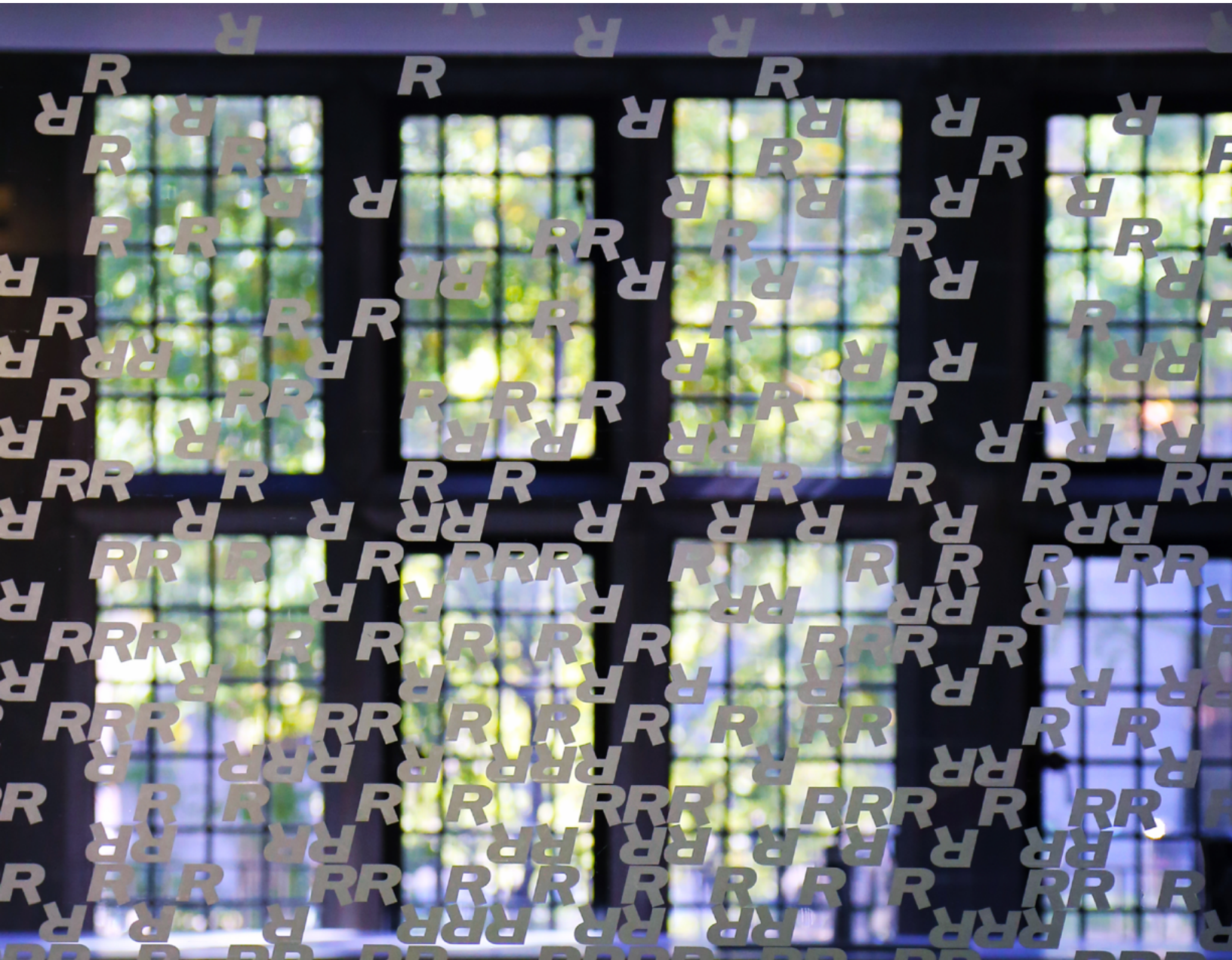
get cosy. The job you start after this is going to be a lot of work and its going to swallow most of the next decade, but don't get complacent. Make sure that you're still willing to pivot and take that risk that is going to get you to where you want to be. The worst thing that will happen is that you might luck out and meet an amazing group of people once more.

So in closing, as I stand up here in front of all of you smart and accomplished people, I feel very fortunate to have had the opportunity of being touched by all of you. Some of you have touched me in ways that will leave me marked forever. Others have taught me the true meaning of penetrating a fertile market, or beating off an aggressive competitor.

Remember passion, challenge, non-complacency are more than just buzzwords I'm using tonight - they are actions. They are actions that will guide you to moments like these. Actions that will surround you with people like the people in this room tonight. These are the actions that will always make sure you are more than just average. Thank you.

Tom Lowden
Valedictorian,
Class of 2014

GROUPS



ADMINISTRATION

THE RECRUITMENT AND ADMISSIONS TEAM



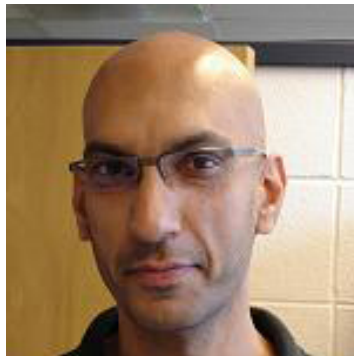
THE CAREER SERVICES TEAM

THE PROGRAM SERVICES OFFICE TEAM



FACULTY

Full-time,
Morning,
Evening



From L to R

AJAY AGRAWAL
AJAZ HUSSAIN
ALEX DYCK



From L to R

ALEXANDRA MACKAY
ALEX MANU
ANIL VERMA



From L to R

ANITA MCGAHAN
ANNE BOWERS
ASHER DRORY



From L to R

AVI GOLDFARB
BEATRIX DART
BECKY REUBER

FACULTY

Full-time,
Morning,
Evening

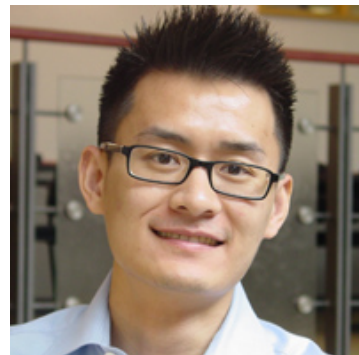
From L to R

BILL MCEVILY
BRENDAN CALDER
BRIAN GOLDEN



From L to R

BRIAN SILVERMAN
CHEN-BO ZHONG
CHRIS KOBRAK



From L to R

CRAIG DOIDGE
DAN RICHARDS
DAVID BEATTY



From L to R

DAVID DUNNE
DAVID GOLDBREICH
DAVID SOBERMAN



FACULTY

Full-time,
Morning,
Evening



From L to R

DELAINE HAMPTON
DILIP SOMAN
DMITRY KRASS



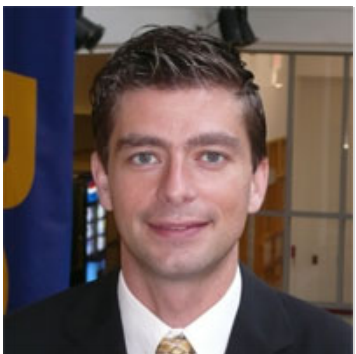
From L to R

DON BREAN
DONNA LOSELL
DRAGAN STO-
JANOVIC



From L to R

ELISA ZULIANI
ERIC KIRZNER
FOTINI TOLIAS



From L to R

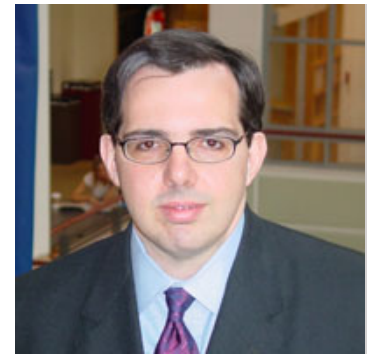
FRANCESCO BOVA
FRANK HAYES
GARY LATHAM

FACULTY

Full-time,
Morning,
Evening

From L to R

GEOFF LEONARDELLI
GLEN WHYTE
GUS DEFRANCO



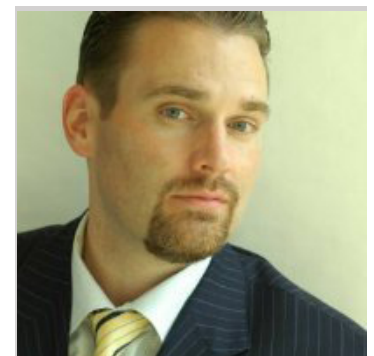
From L to R

HEATHER FRASER
HEATHER-ANNE IRWIN
HESKI BAR-ISAAC



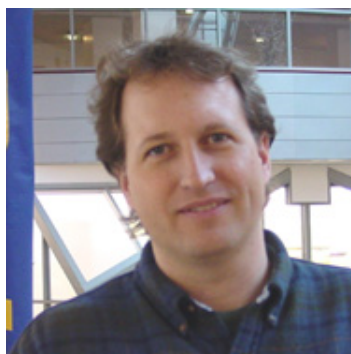
From L to R

HUGH ARNOLD
IGNATIUS HORSTMANN
JAMES TUCKER



From L to R

JAN MAHRT-SMITH
JENNIFER BERDAHL
JENNIFER RIEL



FACULTY

Full-time,
Morning,
Evening



From L to R

JIA LIN XIE
JIM DEWILDE
JIM FISHER



From L to R

JOAN KITUNEN
JOANNE OXLEY
JOE MARTIN



From L to R

JOHN HULL
JOHN OESCH
JOHN O'DWYER



From L to R

JOSEPH MILNER
JOSHUA GANS
KATY DECELLES

FACULTY

Full-time,
Morning,
Evening

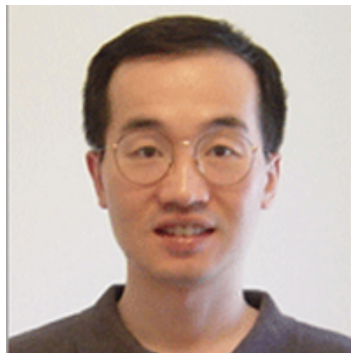
From L to R

KEN CORTS
KENT WOMACK
KEVIN STOLARICK



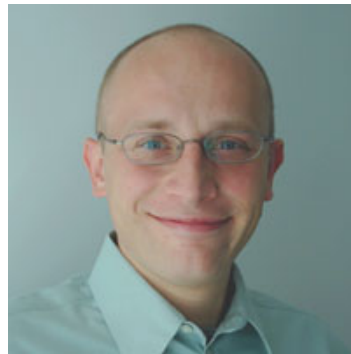
From L to R

KEVIN WANG
LIB GIBSON
LISA KRAMER



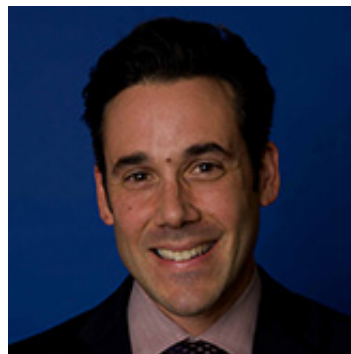
From L to R

LU HAN
LUKASZ POMORSKI
MARA LEDERMAN



From L to R

MARIA ROTUNDO
MARK STABILE
MARLYS CHRISTIAN-
SON



FACULTY

Full-time,
Morning,
Evening



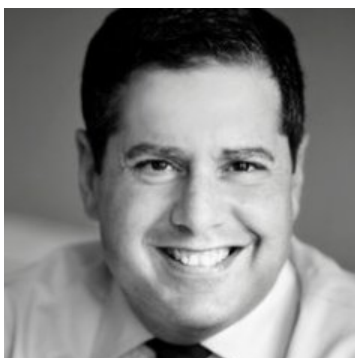
From L to R

MATT MITCHELL
MAUREEN STAPLETON
MELANIE CARR



From L to R

MENGZE SHI
MICHAEL KHAN
MIHNEA MOLDOVEA-
NU



From L to R

MIKE ABRAMSKY
MIKE RYALL
MIKE SIMUTIN



From L to R

MIN ZHAO
MING HU
NICOLE DEHORATIUS

FACULTY

Full-time,
Morning,
Evening

From L to R

NINA MAZAR
NITIN MEHTA
OLE-KRISTIAN HOPE



From L to R

OPHER BARON
PARTHA MOHANRAM
PETER CHRISTOFFERSEN



From L to R

PETER DUNGAN
PHILIPP AFÈCHE
RAMY ELITZUR



From L to R

RICHARD FLORIDA
RICK POWERS
RON BORKOVSKY



FACULTY

Full-time,
Morning,
Evening



From L to R

SAM CUKIERMAN
SARAH KAPLAN
SCOTT HAWKINS



From L to R

SCOTT LIAO
SCOTT RUTHERFORD
SRIDHAR MOORTHY



From L to R

STÉPHANE CÔTÉ
SUSAN CHRISTOFFERS-
EN
TIM ROWLEY



From L to R

TIZIANA CASCIARO
TOM MCCULLOUGH
TOM MCCURDY

FACULTY

Full-time,
Morning,
Evening

From L to R

VINCE BREWERTON
WALID HEJAZI
WENDY DOBSON



From L to R

WENDY ROTENBERG
WILL FALK
WILL HUGGINS



From L to R

WILL MITCHELL
WILL STRANGE
ZAYNA KHAYAT



ROTMAN FINANCE ASSOCIATION
(RFA)



CLUB EXECUTIVES

ROTMAN BUSINESS DESIGN CLUB
(BDC)



ROTMAN MANAGEMENT
CONSULTING ASSOCIATION (MCA)



CLUB EXECUTIVES



ROTMAN HEALTH MANAGEMENT
ASSOCIATION (HMA)



ROTMAN HUMAN CAPITAL CLUB
(HCC)

CLUB EXECUTIVES



ROTMAN OUTREACH



CLUB EXECUTIVES



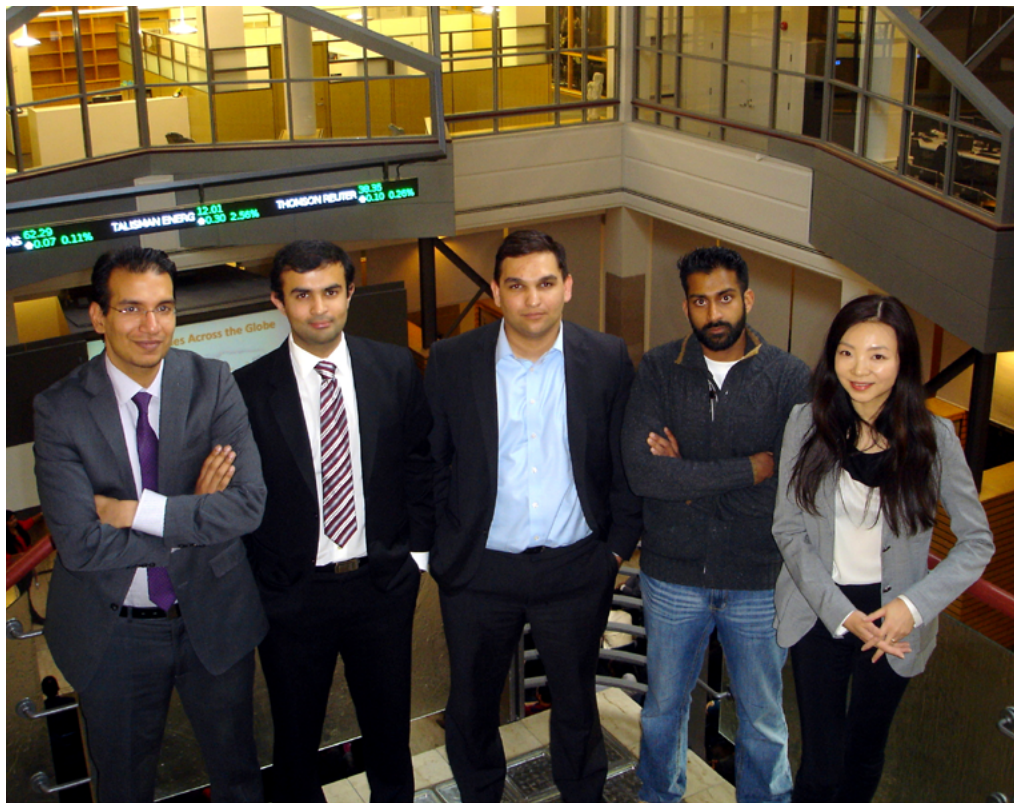
ROTMAN WOMEN IN
MANAGEMENT (WIMA)



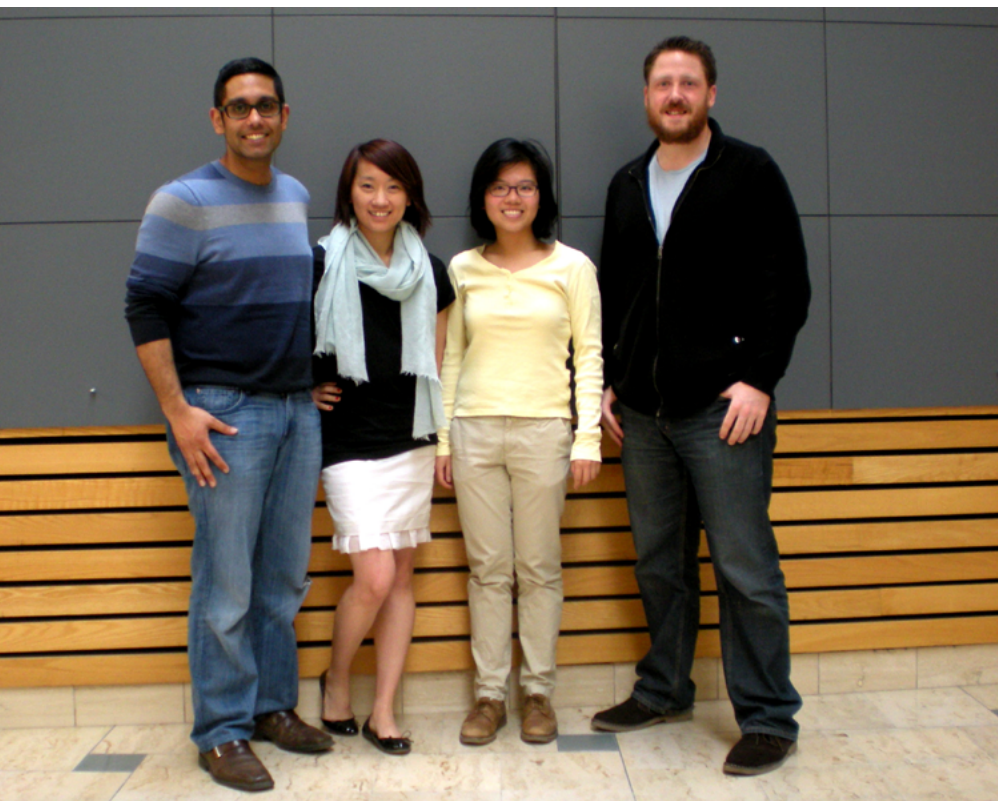
CLUB EXECUTIVES

ROTMAN MARKETING
ASSOCIATION (RMA)





CLUB EXECUTIVES



ROTMAN HEALTH AND WELLNESS
CLUB (HAWC)

ROTMAN ENGINEERS IN
MANAGEMENT (REIM)



CLUB EXECUTIVES

ROTMAN GAMING CLUB





CLUB EXECUTIVES



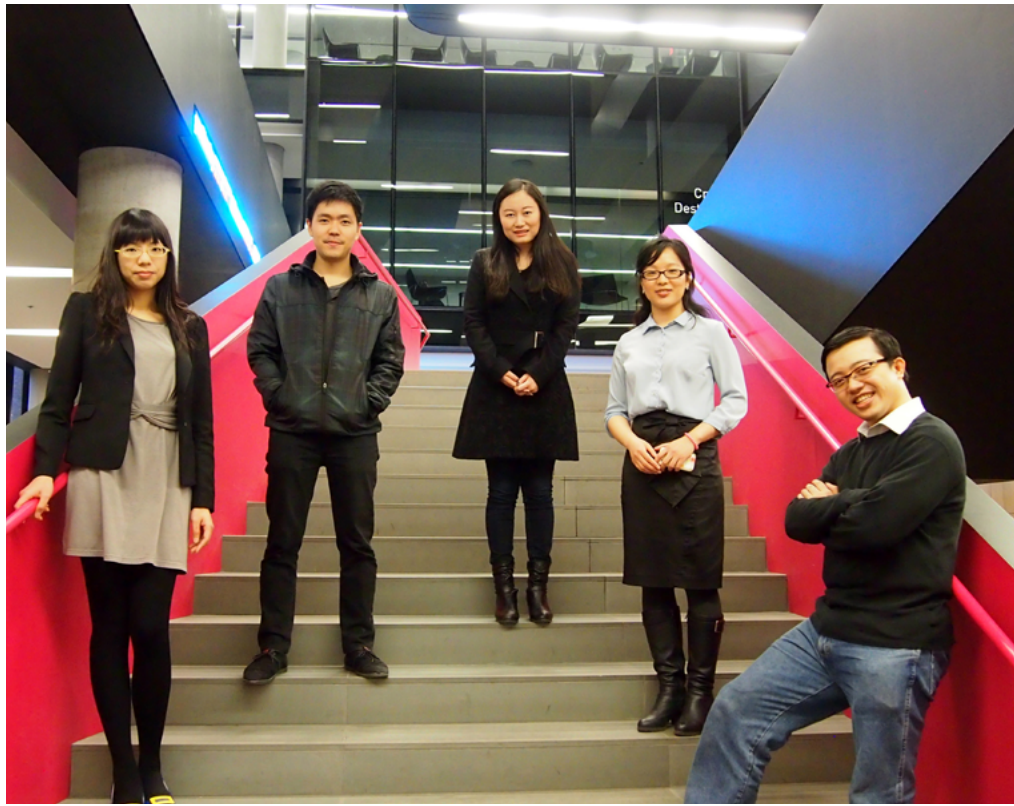
ROTMAN WINE SOCIETY
(RWS)



CLUB EXECUTIVES

MIDDLE EASTERN BUSINESS ASSOCIATION (MEBA)

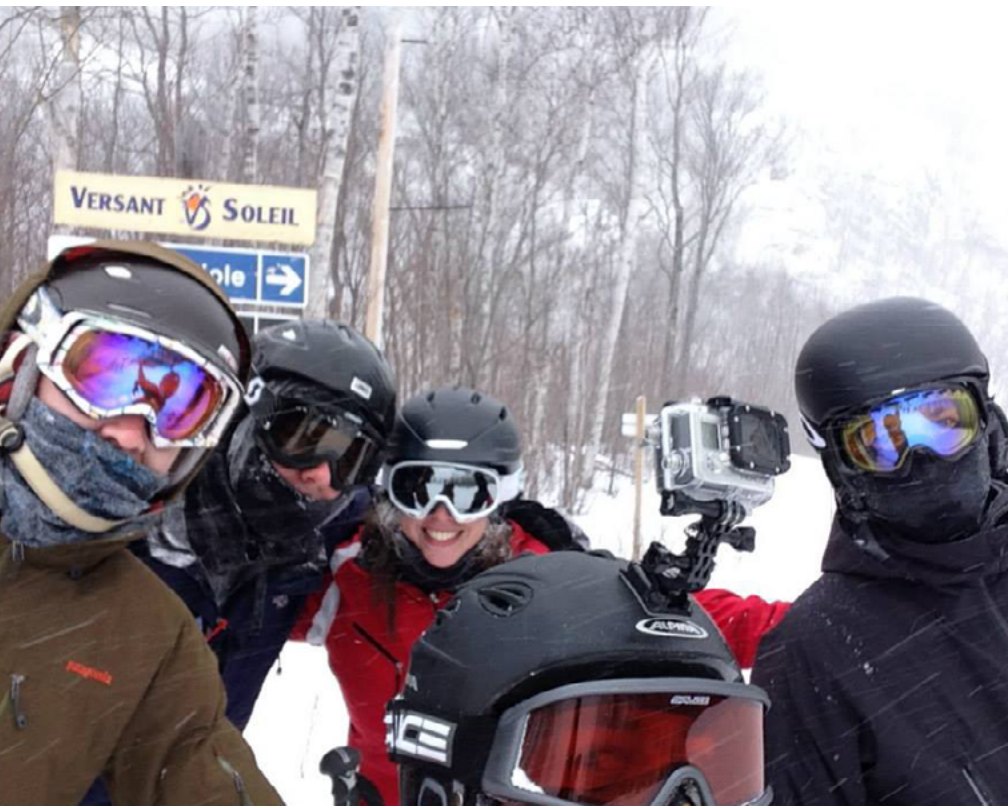




CLUB EXECUTIVES



ROTMAN LATIN AMERICAN BUSI-
NESS CLUB (LABUC)



SPORTS TEAMS

ROTMAN BASKETBALL
TEAM



ROTMAN INNER TUBE
WATER POLO TEAM



SPORTS TEAMS



ROTMAN HOCKEY TEAM









© C.Lam



© C. Lam





MORNING MBA

First Year





EVENING MBA

First Year



THE YEAR 2013-14

$$1 - \mathbb{E}_\lambda \phi(y)$$

$$= 1 - \int_0^c \frac{1}{2} dy = \boxed{1 - \frac{1}{2}c} \approx 0.84$$


$$\frac{1}{2} \int_0^1 |y| = \begin{cases} y & , 0 \leq y \leq 1 \\ 2-y & , 1 \leq y \leq 2 \end{cases}$$

$$f(x) = E \phi(y) = \int \phi(y) f_0(y) dy \quad \frac{1}{2}x \geq \frac{c}{2} \quad (c \leq 1)$$

9) $c \leq 1$:

$$= \int_0^c \underbrace{\phi(y)}_{=1} y \, dy = \int_0^c y \, dy = \left[\frac{1}{2} y^2 \right]_0^c = \frac{1}{2} c^2$$

$$b/c) \in (1, 2] \Rightarrow \int_0^1 \phi(y) y dy + \int_1^c \phi(y) (2-y) dy$$



$$= \frac{1}{2} + \left(2y - \frac{1}{2}y^2 \right) \Big|_1^c \quad (C > 1)$$

$$= \frac{1}{2} + 2C - \frac{1}{2}C^2$$

$$^* \rightarrow 0 \quad \bar{F}(Y^*) \rightarrow \frac{1}{2}$$

say $n_0 > 1$

$$\phi(y) = \begin{cases} 0, & y \notin W \\ 1, & y \in W \end{cases}$$

$$[0,1] \ni \phi(y) = \begin{cases} 1 & \text{---} \\ 0 & \text{---} \end{cases}$$

if $c \leq 1$, then $\alpha = \frac{1}{2}c^2$

if $1 \leq C \leq 2$, then $2 = -1 + 2C - \frac{1}{2}C^2$
 $-1 + 3 - \frac{1}{2} \cdot \frac{9}{4}$

$$\text{Power} = \frac{1}{2} C$$

$$C = \frac{3}{2}$$

$$p_{ow} = \frac{3}{4}$$

$$a = 7$$

$$+ \sqrt{2a} = c$$

$\alpha = 0.05$

$\Rightarrow C \leq 0.33$

Q. 2

$$\tilde{p} = 1 - |\tilde{p}|$$

$$\bar{B} = 1 - \sum_c \bar{c} = 1 - (1 - \frac{5}{10}) = \frac{5}{10} \quad n_0 = 5$$

Dice: $1_6: n=5$

$$d_0 = 1 - \frac{1}{n} = 1 - \frac{1}{5} = 0.8$$

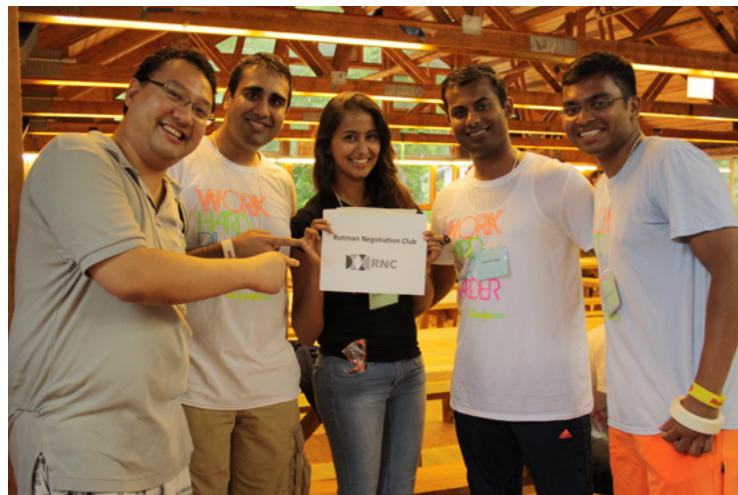
suppose $Y = S$

$$\phi(Y)^{m_v}$$



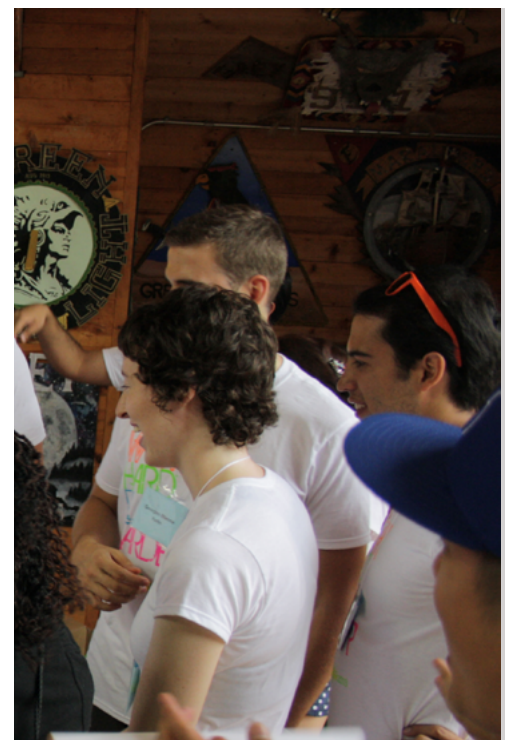
ORIENTATION CAMP







Day 1







Day 1









Day 2







Halloween Party

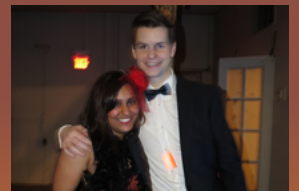






The Bootlegger's Ball

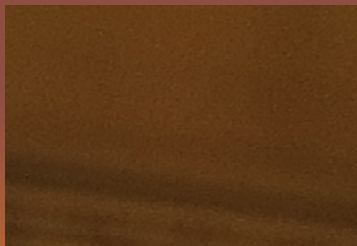
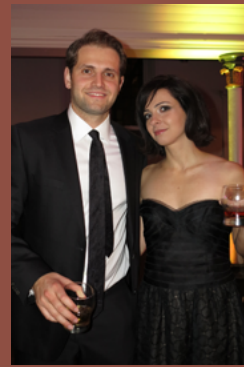






The Bootlegger's Ball





End of Term Party



End of Term Party



End of Term Party



Tipsy Tuesdays - All Year Round



Tipsy Tuesdays - All Year Round



Tipsy Tuesdays - All Year Round



Tipsy Tuesdays - All Year Round



Tipsy Tuesdays - All Year Round



Tipsy Tuesdays - All Year Round



No Talent Night



No Talent Night



No Talent Night



Holi Party



Holi Party



Amazing Race



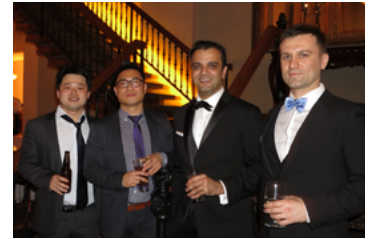




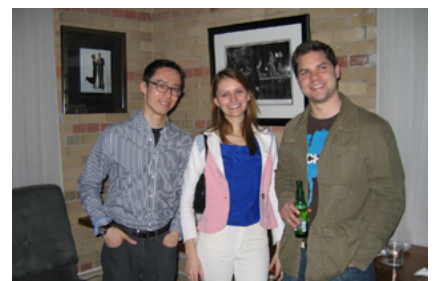
GRAD BALL







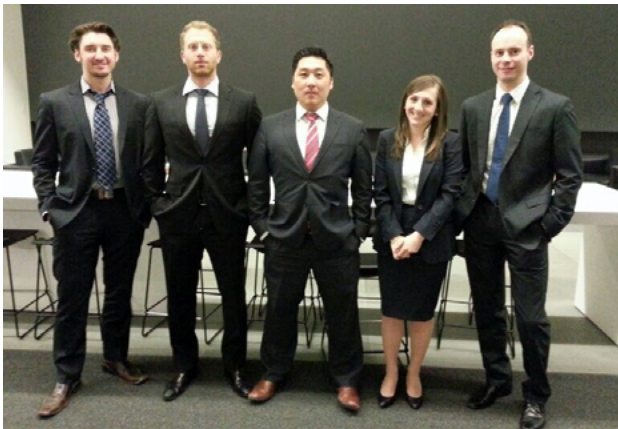
Morning & Evening Cohort



Morning & Evening Cohort



Morning & Evening Cohort



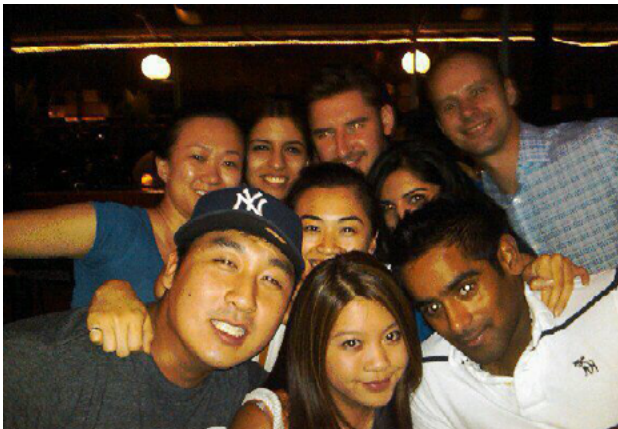
Morning & Evening Cohort



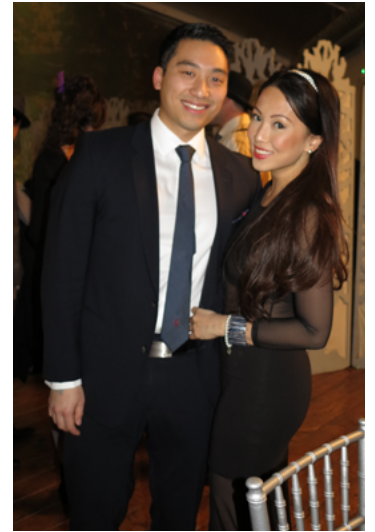
Morning & Evening Cohort



Morning & Evening Cohort



Two's Company!



Valentine's Day



TD Insurance

Celebrate your success!



TD Insurance would like to extend its sincerest congratulations to the **Rotman School of Management** Graduating Class of 2014.

We recognize all the time and effort you put into getting where you are today. As a leader in home and auto group insurance for over 60 years, we are committed to offering you quality insurance products, outstanding customer service and coverage tailored to your needs. Whatever your insurance needs, we're here for you.

Request a quote today

1-888-589-5656

melochemonnex.com/utoronto

HOME | AUTO | TRAVEL



The TD Insurance Meloché Monnex home and auto insurance program is underwritten by SECURITY NATIONAL INSURANCE COMPANY. The program is distributed by Meloché Monnex Insurance and Financial Services Inc. in Quebec and by Meloché Monnex Financial Services Inc. in the rest of Canada. For Quebec residents: We are located at 50 Place Crémazie, Montreal (Quebec) H2P 1B6.

Due to provincial legislation, our auto insurance program is not offered in British Columbia, Manitoba or Saskatchewan.

© The TD logo and other trade-marks are the property of The Toronto-Dominion Bank.

THE CLASS OF 2014



MBA
FULL-TIME, MORNING & EVENING

Rotman MBA Class of 2014



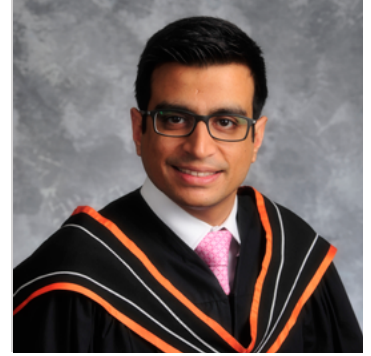
AAYIZ ABBASI



ABDALLA EL NOUNOU



ABHAY OBEROI



ABHEY DADWAL



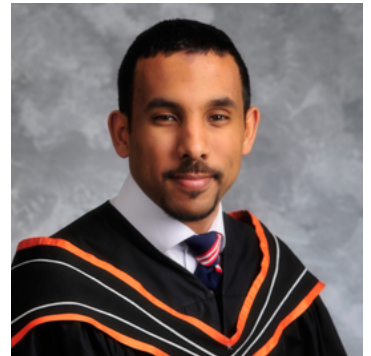
ABHISHEK
CHAUDHARY



ADEOLA ADESOLA



AGNES CHOW



AHMED NASIR



ALBAN COTILLON



ALEJANDRA
OVANDO-SOSA



ALEX BRONSTEIN



ALEX SEBASTIAN



ALEX YEO



ALICIA CHANG

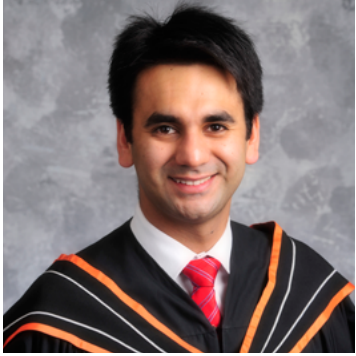


ALICIA LANDEAU



ALLBRIGHT KIM

Rotman MBA Class of 2014



AMAN SINGH



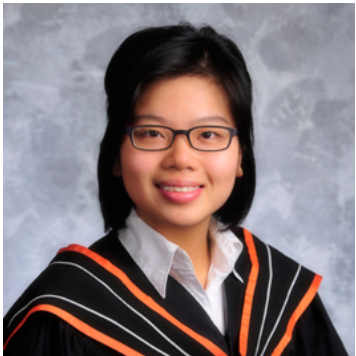
AMEET RAWTANI



AMMAR SABZWARI



AMULYA
SURYADEVARA



AMY CHONG



ANDREI GROPPER



ANDREW BEST



ANDREW FAHMY



ANDREW MURPHY



ANDREW PIENKOW



ANDREW ROBERTS



ANDREW SEGAL



ANDREW TYLER



ANETA FILICIAK

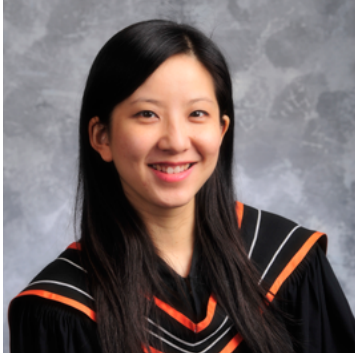


ANGUS CAMPBELL



ANITA TANG

Rotman MBA Class of 2014



ANNA SHEN



ANNE PASCUA



ANNY FONG



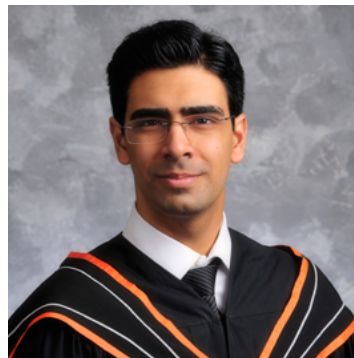
ANTHONY MOOTS



ANTON BLAGOV



ANTON LINA



ARJUN TUTEJA



ARNAB GUHA



ART KULAGA



ARYAVEER SINGH



ASHISH GROVER



ASHISH PATEL



ASHISH POTLA



AVISHEK
CHAKRAVORTY



AVIVA BABINS



AYMEN MALIK

Rotman MBA Class of 2014



BABAK AGHDAEE



BEN YUEN



BENJAMIN
FRIEDMANN-BERNIER



BENJAMIN SHARMA



BENJAMIN TEHARA



BERNARD CHAN



BHAVANI GANAPATHI



BLAKE CONNOY



BO XU



BONNIE YANG



BRANDON DONNELLY



BRENDEN GOMEZ



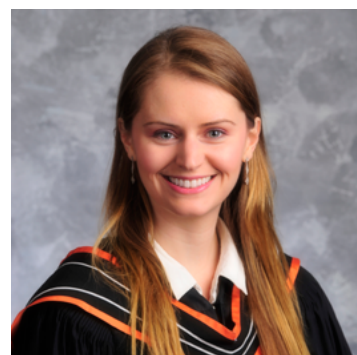
BRETT BURNS



BRUCE YANG



CARI MASON



CAROLE BOOTH

Rotman MBA Class of 2014



CAROLE CHAN



CAROLYN STARK



CATHERINE CHUNG



CHARLENE LIU



CHLOE XU



CHRIS VAN DE WATER



CHRIS ZHU



CHRISTIAN RAVERA



CHRISTIE SONG



CHRISTINA
D'ALIMONTE



CHRISTOPHER AMARAL



CHRISTOPHER LAM



DANIEL KIM



DANIEL LUBIENIETZKY



DANIEL ZOU



DARRYL KING

Rotman MBA Class of 2014



DAVID DE NINO



DAVID KIDECKEL



DAVID WANG



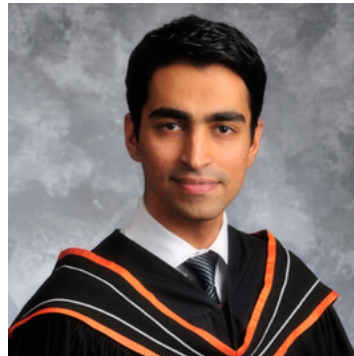
DEAN PITTON



DEEPAK
ANANTHNARAYAN



DENISE HUIE



DHRUPAD KAPLISH



DIWAKER MALLA



DUSHYANT
KATRAGADDA



EDWARD ON



ELANA ABRAMOVITCH



ELIZABETH FARMER



ELTON LAW



ERICA HE

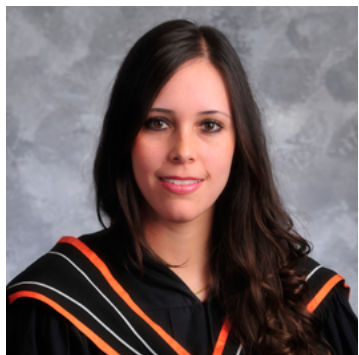


ERIN FINLAY



FEBEKE OKAFOR

Rotman MBA Class of 2014



FERNANDA RIOS



FRANCIS XIA



GABE JENKINSON



GABRIEL MOREAU



GARY ANDAL



GEOFF WHITE



GEOFFREY LOW



GEORGE
ALEMKUNNAPUZHA



GEORGE
STAVROPOULOS



GEORGES ATTIEH



GLADYS CHAN



GURUCHARAN KODALI



GUY MPEGA



HARSHA RAMAN
GADIYARAM



HAYLEY ANGUS

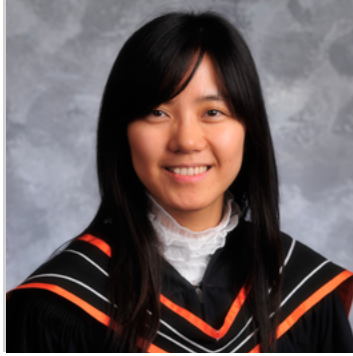


HERMAN TJAHJADI

Rotman MBA Class of 2014



HEZEK BUSERI



HUI LI



IGOR NIRENSHTEIN



INDRA MEWAR



ISAAC BAMGBOJE



IVAN NIKOLAEV



JAKUB WIKTOR



JAMES LAUREYS



JAMIE PANCER



JAMIE YIN



JANICE HUNG



JASON SUKHRUM



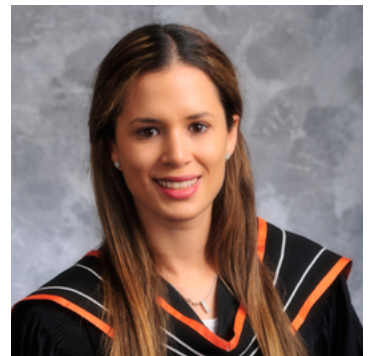
JASON TYLER
BAZARKEWICH



JEFFREY NAGASHIMA



JEREMY SAUNDERS

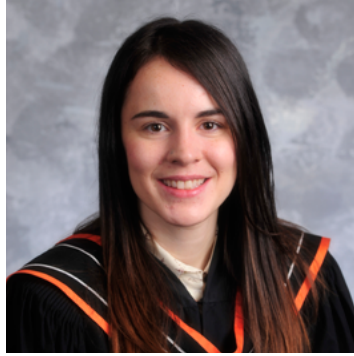


JESSICA SCHWARZ

Rotman MBA Class of 2014



JESSIE CHEN



JILL ANDREWS



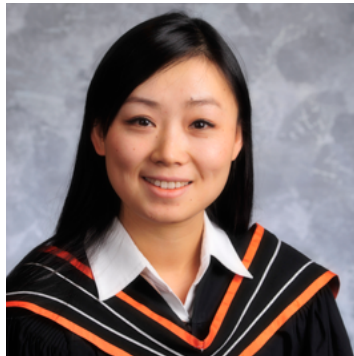
JIMMY DESAI



JIN RYU



JING ROY



JINGWEI SUN



JONATHAN GROSFELD



JONATHAN HOROVITZ



JOSEPH DIAZ



JOSEPH HOKAYEM



JOSEPH KOO



JOSEPH MACDUFF



JOSH CHERUN



JOYCE DONG



JUDE VOON

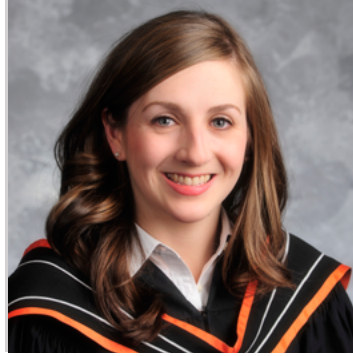


JUDY CHEN

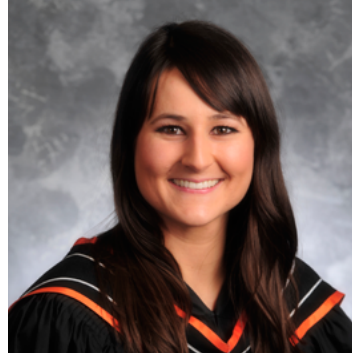
Rotman MBA Class of 2014



JULIA ALEXANDER



JULIA MUTRIE



JULIANE NOVAK



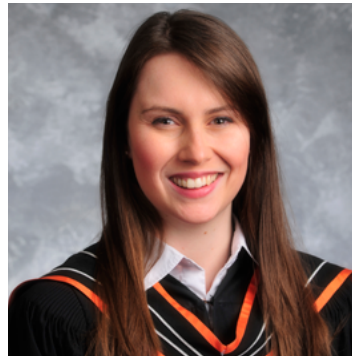
KANIKA PHULL



KAREN LI



KARLA MANCINAS



KATE BURKE



KATIE WIGMORE



KAUSTAV CHATTERJEE



KAVITA NAYAR



KELVIN HON



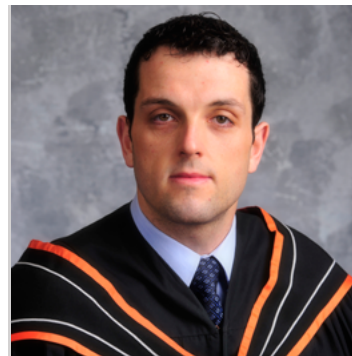
KENT WANG



KIAN MIRSHAHI



KRISHNA VEMPATI

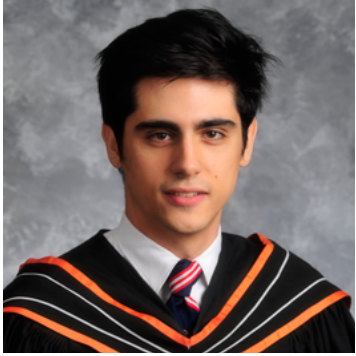


KYLE DRAGINOV



LEE ANDERSON

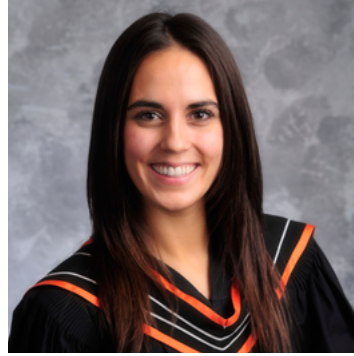
Rotman MBA Class of 2014



LELIAN GIRARD



LENA TANG



LINDSAY GILL



LIVIAN WU



MAGGIE LIU



MARGHERITA BRAGA



MARKO VIDOVIĆH



MARTIN URSUA



MATTHEW CORLEY



MAYA CHENDKE



MICHELLE CORTES



MICHELLE HONG



MIKE JESSOP



MINRUI FU



MOATAZ BELLAH
ABDEL KHALEK



MOHAMMED AMAN

Rotman MBA Class of 2014



MOYUKH BAGCHI



NEGAR MOKHTARNIA



NICHOLAS MELNICK



NICOLAS GONZALEZ



NICOLAS MAYER



NICOLAS PETRERA



NIDHI TANTI



NILANJAN ROY



NILOUFAR
JAVANROUH



NISHANT JAUHARI



NNAMDI ADUBA



NOOPUR PARMAR



PARDEEP GREWAL



PARSA PEZESHKI



PATRICK LAWRENCE



PAUL BASHA

Rotman MBA Class of 2014



PETER SASHA
KUCHARCZYK



PHOUTSADY
NAOVARATH



PIER NASSO



PORIA KANOZI



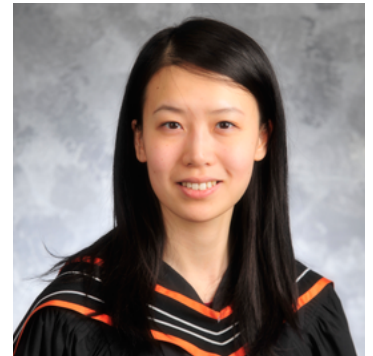
PREM
PANCHATCHARAM



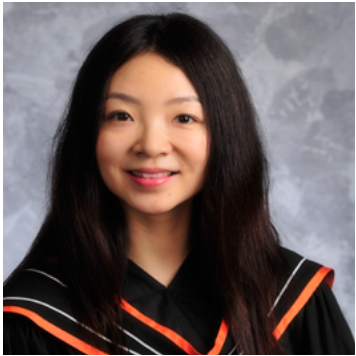
QUEENIE CHOW



RACHEL HAO



RACHEL HUANG



RACHEL HUO



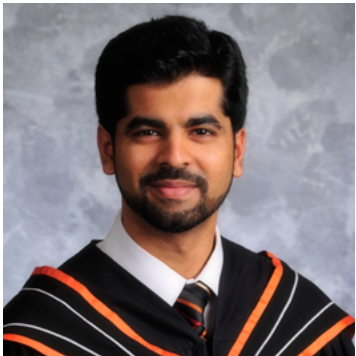
RACHITA RANJAN



RADHIKA SARALAYA



RAHA AFKARI



RAHUL JOSHI



RANODYA UPATHILAKE



RAVI AKULA



RAY PAN

Rotman MBA Class of 2014



REBECCA VERNIK



RICHARD MILLS



ROB MACKENZIE



ROB MCCLINTON



ROBIN RAMCHARAN



ROC CHEN



ROMAN TITOV



ROOPAM SINGH



ROSHAN DAVID



ROSSLYN BARBUZZI



RUCHIR BHATIA



RUI LIU



RYAN KAUDER



RYAN KROOK



RYAN LEE



RYAN TAVARES

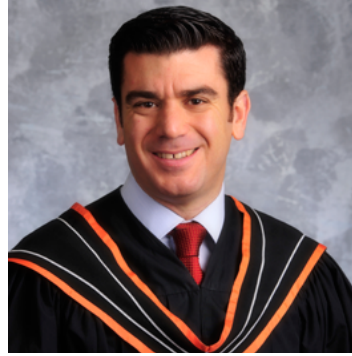
Rotman MBA Class of 2014



RYNA SUN



SAKSHI UPADHYAY



SALEH RUSTOM



SAMARTH MODWAL



SAMRA MIAN



SANDEEP PILLAI



SARAH GIESBRECHT



SARIKA WARANG



SATYAJEET SHINDE



SERGIO LOPEZ



SETARE OMIDI



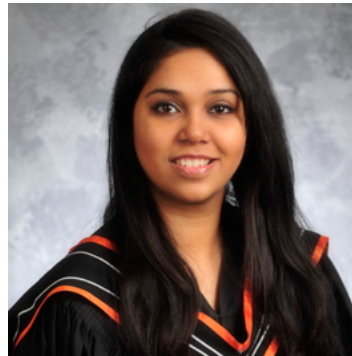
SETH CHITAYAT



SHADI KARGOSHA



SHANKAR MENON

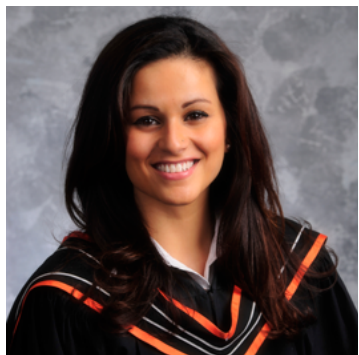


SHIVA PRAKASH

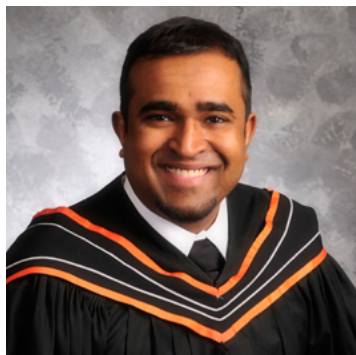


SHEHAN DE SILVA

Rotman MBA Class of 2014



SHIKHA BHUCHAR



SID SUWANDARATNE



SIDDARTH SHETTY



SIDDHARTHA
GHOSHAL



SIDDHARTHA SINGH



SOHRAB SEYEDFATHI



SONYA GULATI



SRETKO BECAREVIC



STEVEN BEI



SUHAN DASGUPTA



SULAKSAN
URUTHIRAMOORTHY



SUNEEL MANHAS



SURBHI GARG



SWATI TRIVEDI



TABITHA FRITZ

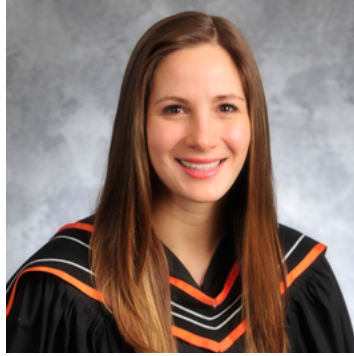


TAREK ABDALLAH

Rotman MBA Class of 2014



SAAD ABUODEH



SABRINA
RADIA-BRAMWELL



TERENCE FONG



TERRI BLOCK



THIRUKUMARAN
RAJENDRAN



TOM LOWDEN



TOMOKO MAYUMI



TRANG NGUYEN



TRUNG NGUYEN



TULIKA PANDEY



TYRENNY ANDERSON



VALENTINA CARVALLO



VANESSA HUI



VICKY FAN



VIDISHA SANEVAL



VIK VENKATRAMANI

Rotman MBA Class of 2014



VIVIEN KAN



WADE SAHNI



WILLIAM COCKS



WILLIAM HARPER
HEINSEN



YASSI MOHSENI



YIHENG HAN



YUTA FUKAO



ZACHARY
DOMBROWSKI



ZAHEER
MUSCATWALLA



ZHAN ZHAI



ZUBAIR IMAM



ZUBAIR SHAH

Congratulations!

TOP 40 UNDER 40 (2 YR)



ALEX YEO

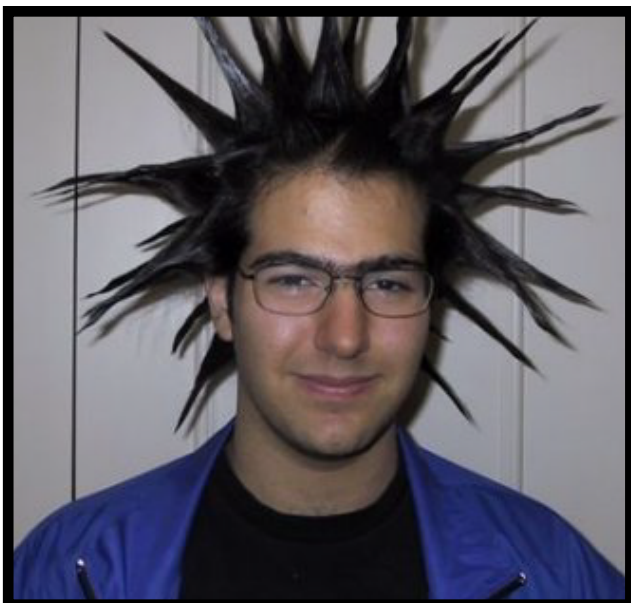
TOP 40 UNDER 40 (3 YR)



DAVID BIENVENU

ROTMAN IDOLS

MOST LIKELY TO BE THE NEXT
STEVE JOBS (2 YR)



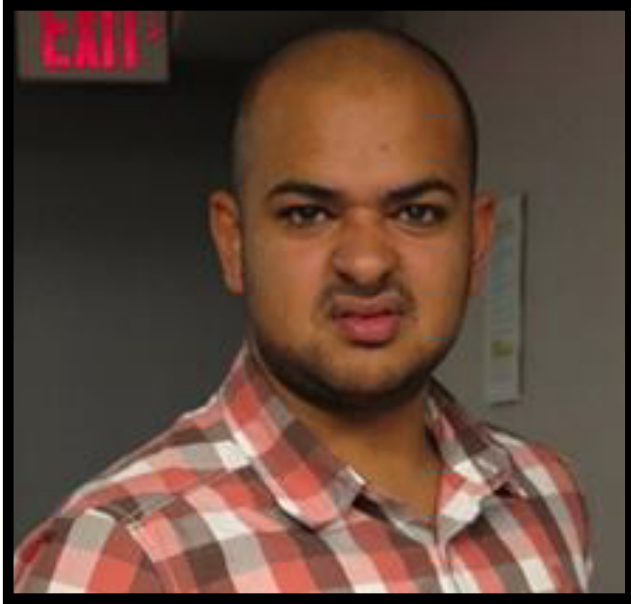
COBI DRUXERMAN

MOST LIKELY TO BE THE NEXT
STEVE JOBS (3 YR)



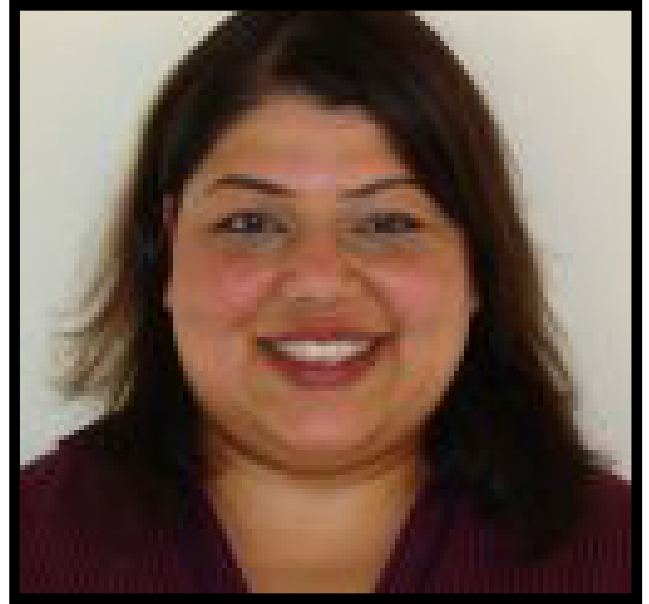
NICO GONZALEZ

**MOST LIKELY TO WIN THE LOT-
TERY.. And Lose the Ticket!**



ANDREW FAHMY

SLEEPIEST ROTMANITE (3 YR)



MARYA WAHEED

ROTMAN IDOLS

**MOST LIKELY TO HAVE THEIR
OWN REALITY SHOW (2 YR)**



PATRICK LAWRENCE

**MOST LIKELY TO HAVE THEIR
OWN REALITY SHOW (3 YR)**



HEZEK BUSERI

**MOST AGGRESSIVE CLASS
PARTICIPATOR (2 YR)**



SAAD ABUODEH

**MOST AGGRESSIVE CLASS
PARTICIPATOR (3 YR)**



JEREMY ROBINSON

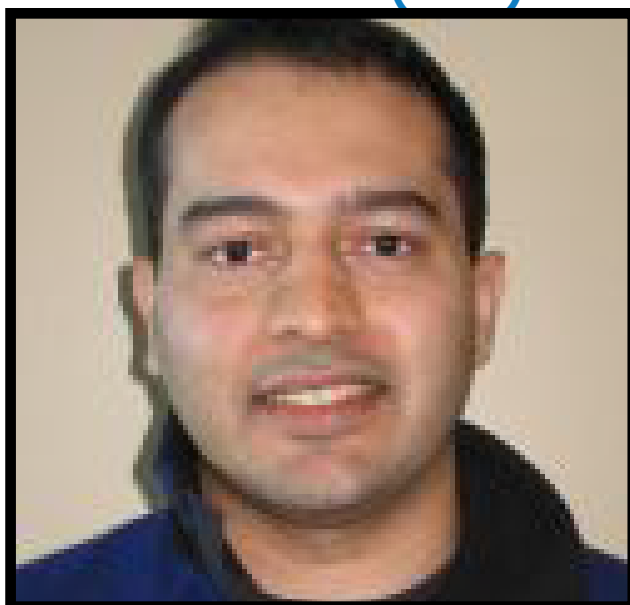
ROTMAN IDOLS

**MOST TIME SPENT IN THE
FISHBOWL**



YASSI MOHSENI

**MOST LIKELY TO ARGUE WITH AN
INSTRUCTOR (3 YR)**



NIKHIL KANWAR

**FUNNIEST INTOXICATED
ROTMANITE**



ROBYN HUANG

**MOST LIKELY TO HAVE THEIR
NAME MISPRONOUNCED (3 YR)**



PHOUTSADY NAOVARATH

ROTMAN IDOLS

**MOST LIKELY TO HAVE THEIR
NAME MISPRONOUNCED (2 YR)**



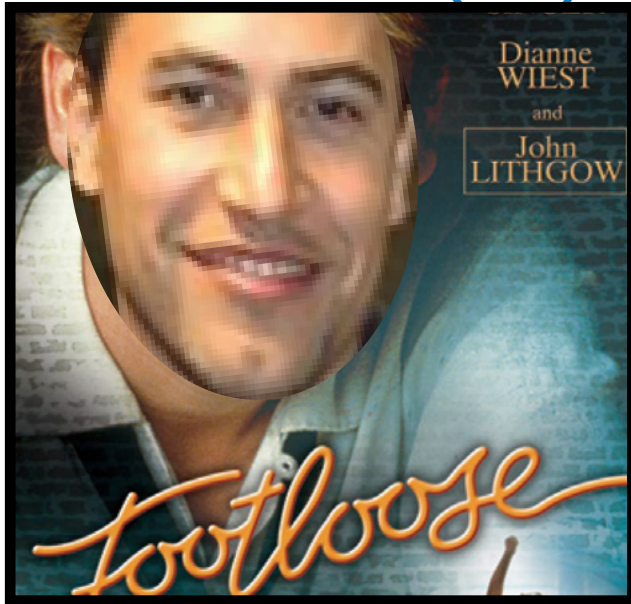
GEORGE JACOB ALEMKUNNAPUZHA

**MOST LIKELY TO HAVE THEIR
NAME MISPRONOUNCED (2 YR)**



SULAKSAN URUTHIRAMOORTHY

ROTMANITE WITH THE BEST
DANCE MOVES (2 YR)



MATTHEW GENTLES

ROTMANITE WITH THE BEST
DANCE MOVES (3 YR)



HEZEK BUSERI

ROTMAN IDOLS

MOST LIKELY TO BE LATE FOR
CONVOCATION



ANETA FILICIAK

MOST LOOKS LIKE A BANKER



ZACHARY DROMBOWSKI

ROTMAN PAPARAZZI AWARD



MARTIN URSUA

BEST PROCRASTINATION MATERIAL PROVIDER



JACQUIE RICHARDS

ROTMAN IDOLS

BEST ANDREW AWARD

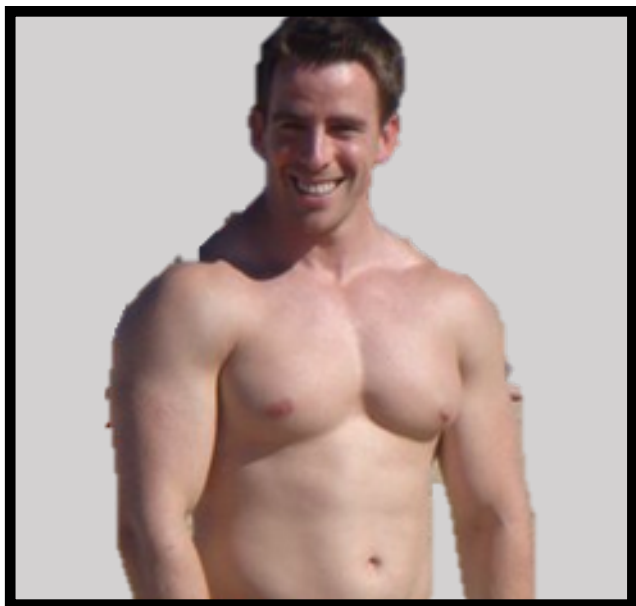


JILL ANDREW(S)

BEST ANDREW AWARD (RUNNER UP)



ANDREW BEST



**BEST ROTMAN BROMANCE
(2 YR)**

BRONSTEIN AND HIS MEN

ROTMAN IDOLS

**BEST ROTMAN BROMANCE
(3 YR)**

ISAAC CAPUA AND CHRIS KRASOWSKI





AMEET RAWTANI



ROSSLYN BARBUZZI

CELEBRITY LOOK-ALIKES



AHMED HALAWA



TOM LOWDEN

ROTMAN MBA

CLASS OF 2014



WE DID IT!